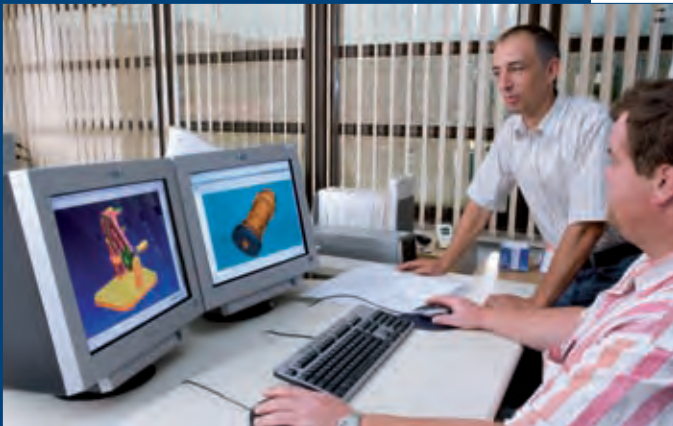


“Everything from experts”
CONTRACT MANUFACTURE AND
CONTRACT ASSEMBLY

DESIGN, MANUFACTURE, ASSEMBLY, SURFACE
TREATMENT, FAIRS, SUPPLY

Take advantage of our strong points: flexibility, highest quality standards, continuous organization and production flow and a most reliable delivery service.



DESIGN

Based on the NX6 CAD/CAM design software we offer our customers assistance throughout the entire work cycle – starting with material selection and extending to series production and assembly, via production- and assembly-aligned design processes. This ensures an efficient and cost-saving production flow from the start. Our state-of-the-art transfer lines allow for central monitoring and maximum safety in terms of data transfer.

MANUFACTURE

MILLING

Milling technology is of prime importance to us. We have milling machines with max. travel 3,400 mm, designed for a max. weight of 10 t per work piece. The spectrum ranges from 3-axis vertical machines to 4-axis horizontal machining centers and 5-axis machining centers. To ensure cost-effective manufacture most of our machines are equipped with rotary storage units, tool changers, integrated probes, internal coolant supply, powerful gear spindles etc.



TURNING

On state-of-the-art CNC and cycle-controlled automatic lathes and on multi-spindle turning centers with power tools we can manufacture work pieces up to a maximum of 1,400 mm in diameter, tailored to your specifications. Highly skilled employees are on hand with Bihler know-how to develop and enhance your products.



BIHLER



GRINDING

No matter what are the machine parts – be it guides, plates, shafts, eccentric shafts, spindles, rings or the like – we help you to optimize your components in terms of precision and quality.

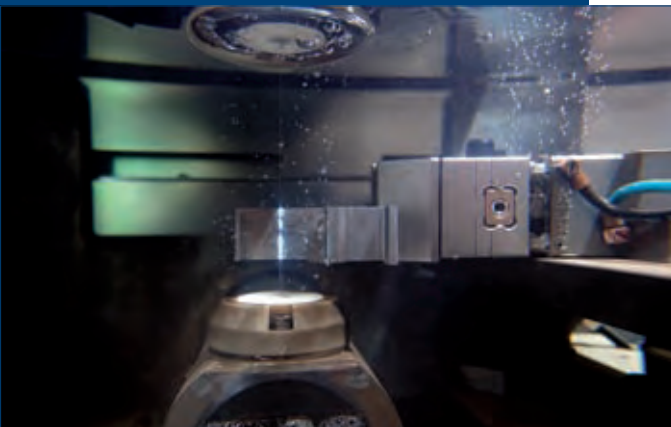
CAMS

According to your directions our experts also take on the design and manufacture of your flat and double cams.



FITTER'S SHOP

Reliability, on-time delivery and a high degree of cost-effectiveness form the foundation for mutually successful projects. On our flame cutter parts up to 200 mm thick can be cut to size as per drawing. Besides we provide you with welding and sheet metal forming services, including heat treatment.



OTHER SERVICES

Keyway broaching: width ranging from 8 to 28 mm

Gear cutting: up to 940 mm in diameter and max. module size 5

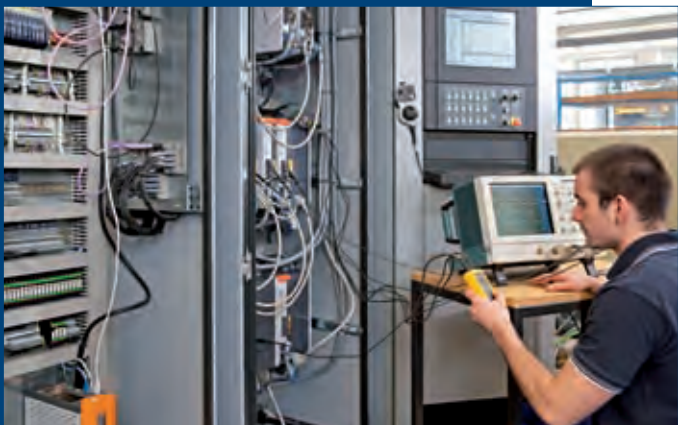
Wire EDM: On five automated EDM machines equipped with Winstat Framework, the Manufacturing Executive System (MES) developed by Zwicker Systems, carbide can be dried automatically after machining (Ra 0.1 surface finish attainable with steel and Ra 0.05 with carbide). Cavity sinking by EDM: up to a max. height of 300 mm



ASSEMBLY

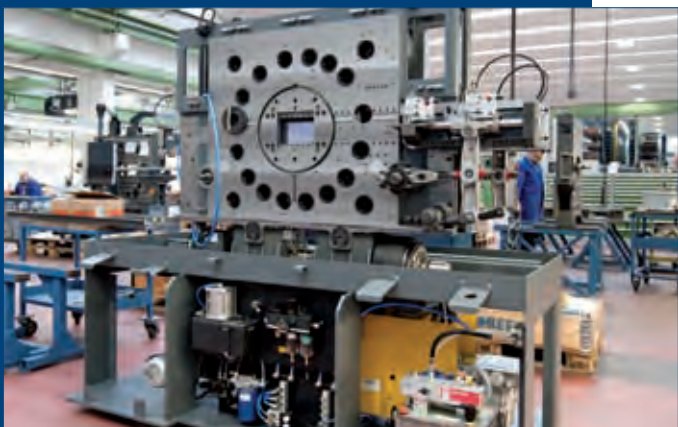
ASSEMBLY OF STRUCTURAL COMPONENTS

This is where users can benefit from all our expertise. On request we supply you with the individual bought-in parts, manufacture the parts to be milled and turned, and join them together to form a perfect union. Efficiently, carefully and in due time!



MANUFACTURE OF CONTROL CABINETS

According to your drawings and drafting aids we manufacture control cabinets, terminal boxes and control panels. In addition we take on the manufacture of electronic appliances. We check your equipment as per circuit diagram and/or perform complete function tests. Wire numbering and target designation do not pose a problem for us either. We use Eplan P5.70 or P8 to produce our own technical drawings in-house. On a Steinhauer DrillMate machining center holes are drilled in mounting plates. Our control cabinets contain Siemens, Wago, ABB, Rittal, Lapp, and B&R components.



MACHINE ASSEMBLY

As system supplier in punching-bending technology we look back on decades of experience in the assembly of machine tools and peripherals. At adaptive workplaces our flexible staff perform assembly work according to drawings, parts lists, circuit and fluidics diagrams. Due to the implementation of numerous tailor-made solutions in the fields of mechanics, electro-mechanics and hydraulics we have acquired excellent problem solving skills in assembly technology. Thanks to our own product range we are in a position to handle both smaller structural components from the tool shop and machine weights up to 18,000 kg.



SURFACE TREATMENT

On request we can parkerize, paint and coat your work pieces. Other services: shot blasting and laser marking



QUALITY MANAGEMENT

Prime example for highest quality standards: our own Bihler product. Our efficient Quality Management System according to DIN EN ISO 9001:2008 allows us to maintain those high standards even in the fields of contract manufacture and contract assembly. A Zeiss CMM (Coordinate Measuring Machine) located in our air-conditioned precision measuring room performs dimensional checks on precision parts during manufacture. At final inspection skilled employees carry out quality checks according to inspection regulations or check-lists.

Otto Bihler Maschinenfabrik GmbH & Co. KG
Werk Füssen
Hiebeler Straße 6
D-87629 Füssen
Tel.: +49/(0)8368-18 92
Fax: +49/(0)8368-18 93 654
E-Mail: lohnfertigung-fs@bihler.de
www.bihler-fuessen.de