



GRM 80P

AUTOMATIC STAMPING AND FORMING MACHINE

A lot of free space for new prospects

The GRM 80P is perfectly designed for the economic manufacture of larger precision parts made from strip and wire as well as for complex applications. The machine's design provides significantly more free space on the work plate as a result of the clear spatial separation of stamping and forming operations. In this way, additional tool movements and Bihler key technologies as tapping, screw insertion, welding, etc. can be integrated into respective

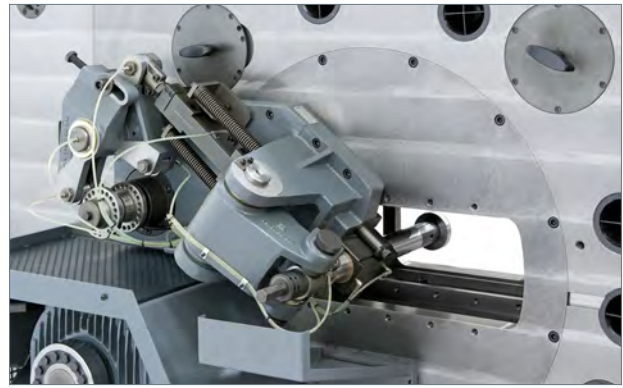
manufacturing concepts. The powerful two-point eccentric press for more voluminous cutting tools installed alongside the work plate and the large center aperture in the work plate also open up new fields of application. NC or mechanically controlled feeds guarantee the high-precision supply of material. Rapid tool-change systems reduce changeover times to an absolute minimum.

The highlights at a glance

- The press installation alongside the work plate gives more free space on the work plate
- Powerful two-point eccentric press with large mounting space for more voluminous die sets
- Two drive positions for control movements below the press
- Compatible with GRM 50, GRM 80 and GRM 80E tools
- Large center aperture in the work plate for flexible central mandrel strokes
- Easy integration of all Bihler key technologies
- Shortest tool changeover
- Excellent value for money



NC radial gripper feed unit RZV 2



Central mandrel

Accessories

- NC Radial Gripper Feed RZV 2 (standard): any feed pitch, mechanical feed up to max. 500 mm feed pitch
- Two-point eccentric press: nominal load 400 kN, stroke 20 mm; mounting space for die set up to 670 mm (length) and 230 mm (width)
- Different types of slide units (max. stroke 95 mm; max. nominal load 90 kN)
- Central mandrel: positive pull or positive push (max. stroke 80 mm; max. nominal load 35 kN)

Basic equipment

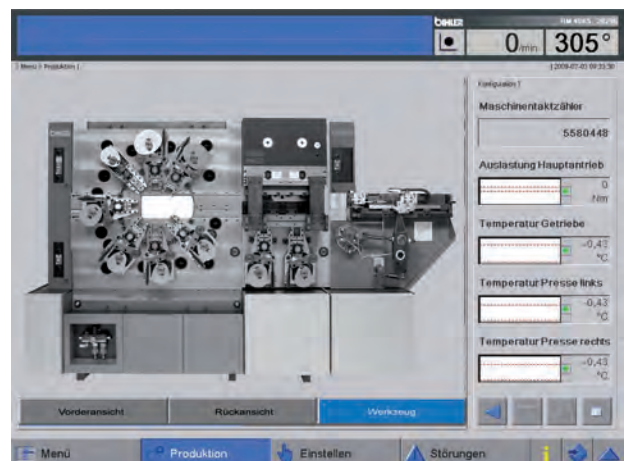
- Infinitely variable drive
- Pneumatic system
- Central oil lubrication system
- 5 high-precision leveling mounts

Control system

The user-friendly, highly-flexible Bihler process control Vari Control VC 1 enables the intuitive setting and operation of the machine.

Technical data

- Maximum machine speed: 250 1/min
- Material trailing edge: 90 mm in front of machine work plate
- Machine weight: 4,500 kg subject to level of equipment (tooling excluded)
- Machine dimensions: width 3,930 mm x depth 1,595 mm x height 2,220 mm



(subject to change without notice 03/10)